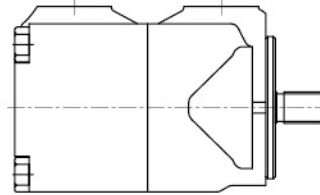
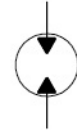


45M 系列马达

45M SERIES MOTOR



液压符号
Hydraulic Sign



型号说明

MODEL CODE

45M	185	A	11	C	20	***
系列号 Series	定子规格-标称扭矩额定值 Ring size-Nominal torque Rating (lb.in/100psi)	安装法兰和油口连接 Mounting flange and port connections	轴伸形式 Shaft type	盖端位置 Cover position	设计号 Design number	特殊后缀 Special suffixes
25M	42、55、65	A-SAE 2- 螺栓安装法兰和 SAE 4- 螺栓法兰连接 A-SAE type 2- bolt mounting flange SAE 4-bolt flanged port connections	1-直轴带键 11-花键 1-Straight keyed 11-Splined	A-端盖油口与 壳体油口反向 B-端盖油口与壳 体油口逆时针转90° C-端盖油口与壳 体油口同向 D-端盖油口与壳体 油口顺时针转90° A-Cover port opposite body port B-Cover port 90° count- erclockwise from body port C-Port connections in line D-Cover port 90° clock- wise from body port	20	无 No
35M	80、95、115					
45M	130、155、185					
50M	220、255、300					114、124

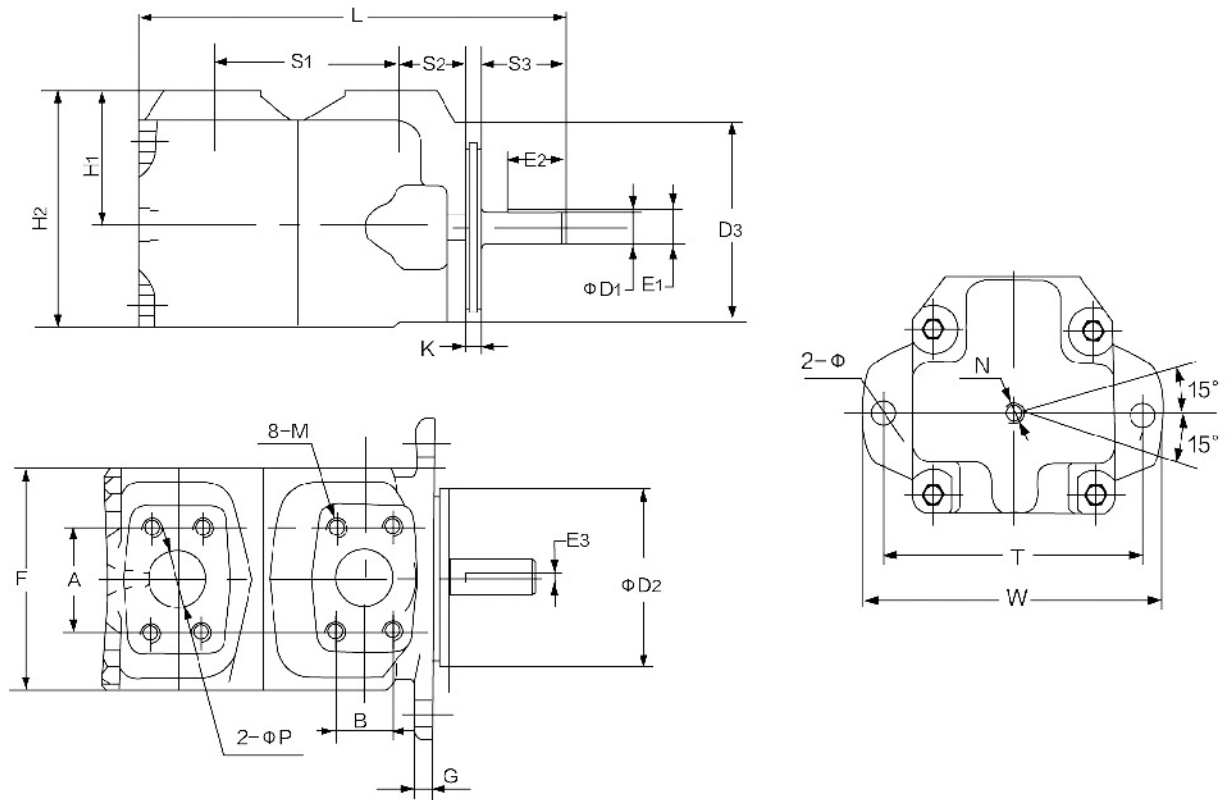
技术参数

TECHNICAL DATA

型号系列 Model Series	扭矩 Torque Nm/6,9 bar (lb in/100 psi)	排量 Displacement cm ³ /r (in ³ /r)	在1200r/min下要求 的流量输入 Flow input/required @1200 r/min L/min(USgpm)	最高转速和压力 Maximum speed & pressures	近似重量 Approx. weight kg (lb)
25M	4,7(42) 6,2(55) 7,3(65)	43,9(2.68) 57,7(3.52) 68,7(4.19)	52,6(13.9) 69,3(18.3) 82,5(21.8)	3600 r/min @ 34 bar (500 psi) † 4000 r/min @ 34 bar(500 psi) ‡	18 (40)
	35M	9,0 (80) 10,7(95) 13,0(115)	83,6(5.10) 100,3(6.12) 121,9(7.44)		100,3(26.5) 120,4(31.8) 146,1(38.6)
45M		14,7(130) 17,5(155) 20,9(185)	138,0(8.42) 163,2 (9.96) 193,2(11.79)	165,4(43.7) 195,7(51.7) 232,0(61.3)	2600 r/min @ 155 bar(2250 psi) † 3000 r/min @ 172 bar(2500psi) ‡
	50M	24,9(220) 28,8(255) 33,9(300)	231,2(14.11) 268,1(16.36) 317,1(19.35)	277,5(73.3) 321,8(85.0) 380,4(100.5)	

安装连接尺寸

INSTALLATION DIMENSIONS



型号说明

MODEL CODE

型号 Series	A	B	D1	D2	D3	E1	E2	E3	F	G	H1
25M	58.72	30.12	22.23/22.20	101.60/101.55	120.7	24.46/24.31	31.8	4.75	117.3	12.7	76.2
35M	69.85	35.71	31.75/31.70	127.00/126.95	147.6	35.18/34.93	28.4	7.92	139.7	16	88.9
45M	77.77	42.88	31.75/31.70	127.00/126.95	147.6	35.18/34.93	28.4	7.92	158.8	16	93.7
50M	88.90	50.8	44.45/44.42	152.40/152.35	200.2	49.38/49.12	50.8	11.10	196.9	22.4	120.7

型号 Series	H2	K	L	M	N	P	Φ	S1	S2	S3	T	W
25M	134.9	9.65/9.14	241.1	0.4375-14UNC-2B	1/4NPTF-18	31.75	14.2	104.7	39.6	49.3	146.1	174.75
35M	158.8	12.7/12.2	275.9	0.500-13UNC-2B	3/8NPTF-18	38.10	17.5	122.4	48.3	49.3	181.1	212.9
45M	173	12.7/12.2	311.2	0.500-13UNC-2B	1/2NPTF-14	50.8	17.5	145.6	52.3	49.3	181.1	212.9
50M	219.7	12.7/12.2	369.3	0.500-13UNC-2B	1/2NPTF-14	63.5	20.6	162	69.9	68.18	228.6	266.7

脚架安装

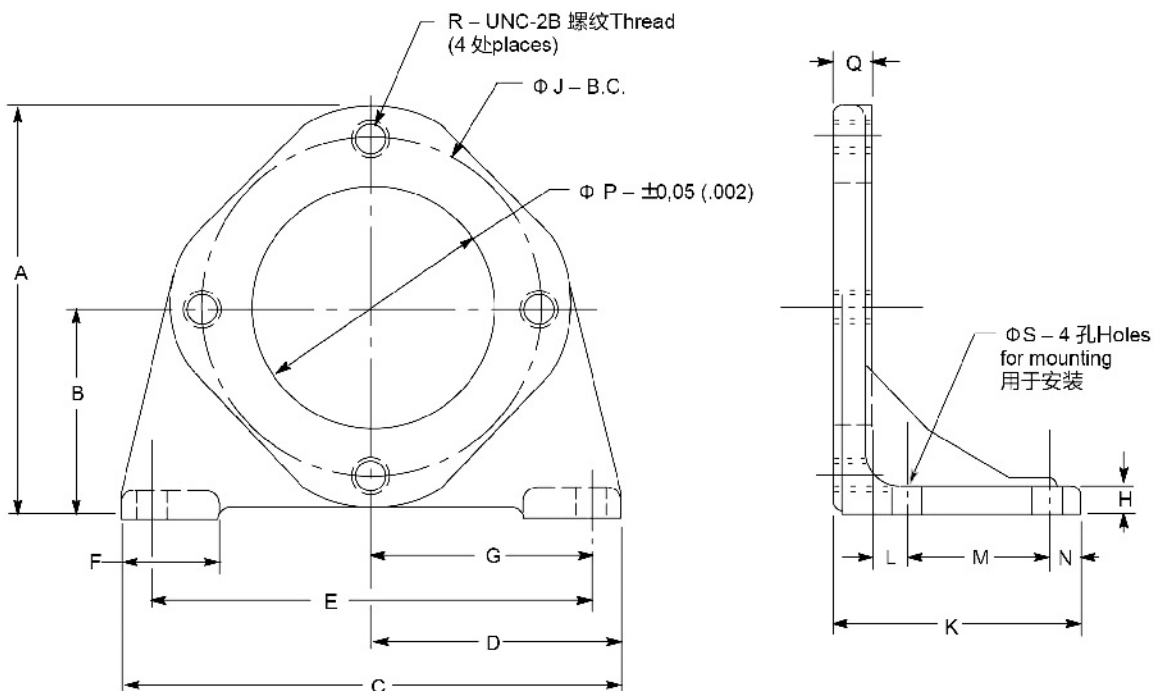
FOOT MOUNTS

下表列出的脚架套件，能够用于安装具有标准SAE J744-2螺栓A、B或C安装法兰的马达。这些标志对应脚架套件型号中的字母-A-，-B-，-C-。每个套件包括脚架和用于安装马达的螺钉。套件不包括在马达内，必须用型号单独订货。

用于配合50M马达的SAE D安装法兰的脚架 (件号279625) 和安装螺钉 (件号214794, 2件) 也有货。

The foot bracket kits tabulated below can be used to mount motors having standard SAE-J 744 2-bolt A, B, or C mounting flanges. These designations correspond to -A-, -B-, and -C- letters in the foot bracket kit model number. Each kit includes a bracket and screws for mounting to the motor. Kits are not included with motors and must be ordered separately by model number.

Also available are a bracket (part number 279625) and mounting screws (part number 214794, 2 required) to fit the SAE D mounting flange of 50M motors.



套件型号 Kit model number	尺寸 Dimensions							
	A	B	C	D	E	F	G	H
FB-A-10	134,9(5.31)	69,9(2.75)	152,4(6.00)	76,2(3.00)	127(5.00)	36,6(1.44)	63,5(2.50)	12,7(.50)
FB-B-10	180,8(7.12)	92,2(3.63)	171,5(6.75)	85,8(3.38)	146(5.75)	36,6(1.44)	73,2(2.88)	12,7(.50)
FB-C-10	215,9 (8.50)	109,5(4.31)	265,2(10.44)	132,6(5.22)	235(9.25)	50,8(2.00)	117,6(4.63)	15,7 (.62)

套件型号 Kit model number	尺寸 Dimensions								
	Φ J	K	L	M	N	Φ P	Q	R	Φ S
FB-A-10	106,4(4.19)	96(3.78)	15(.59)	50,8(2.00)	12,7(.50)	82,63(3.253)	17,5(.69)	.38-16	11,2(.44)
FB-B-10	146(5.75)	95,8 (3.77)	15(.59)	50,8(2.00)	12,7(.50)	101,68(4.003)	17,3(.68)	.50-13	17,3(.68)
FB-C-10	181,1(7.13)	131,6 (5.18)	19(.75)	76,2(3.00)	17,3(.68)	127,08(5.003)	19(.75)	.62-11	17,3 (.68)